



Glebe Road, Petersfield

Price Guide £490,000



Williams of Petersfield

INDEPENDENT ESTATE AGENTS

Glebe Road, Petersfield

Nestled in the highly desirable village of Buriton, just a short drive from Petersfield, this impressive four-bedroom semi-detached family home awaits its new family. Petersfield has a main train line to London Waterloo and also buses to Petersfield or other nearby towns.

As you step through the light and airy porch, a delightful insight through to this beautiful property begins. To the right of the porch, a small office space, providing a dedicated area for work or study. Adjacent to the office, a convenient downstairs w.c. offers added practicality.

Continuing into the house, the living room is on the left, featuring a bright bay window that fills the room with natural light. The downstairs layout flows seamlessly, leading you to the dining area with large windows and doors that open up to the garden.

The recently renovated kitchen showcases a high-quality finish, exhibiting both style and functionality. With an impressive island at its centre and ample storage space.

As you ascend to the upper floor, there are four bedrooms, each generously providing wardrobe space for convenient storage of personal belongings. The family bathroom and separate shower room offer flexibility and convenience for the entire household.

Outside, the garden unveils a perfect balance between size and ease of maintenance. It presents an ideal space for outdoor activities, gardening, or simply unwinding in the fresh air.

Viewing is highly recommended.



Location - Buriton

Buriton is a delightful and extremely popular village on the Hangers Way bridle path, it lies at the foot of the tree-covered hill of Head Down, one of the highest points of the South Downs. Footpaths from the village connect to the South Downs Way and the adjacent Queen Elizabeth Country Park making it very popular area with walkers, horse riders and mountain bikers. The village has a primary school, two popular public houses, village hall, as well as the village pond and the church of St. Mary. The close by market town of Petersfield offers a comprehensive range of shopping, sporting and leisure facilities together with a main line station on the Portsmouth to London Waterloo line.

Local authority

East Hampshire District Council
Penns Place, Petersfield
Hampshire, GU31 4EX
01730 266551

Additional Information

All main services
EPC - C
Council Tax - D

Tenure

Freehold



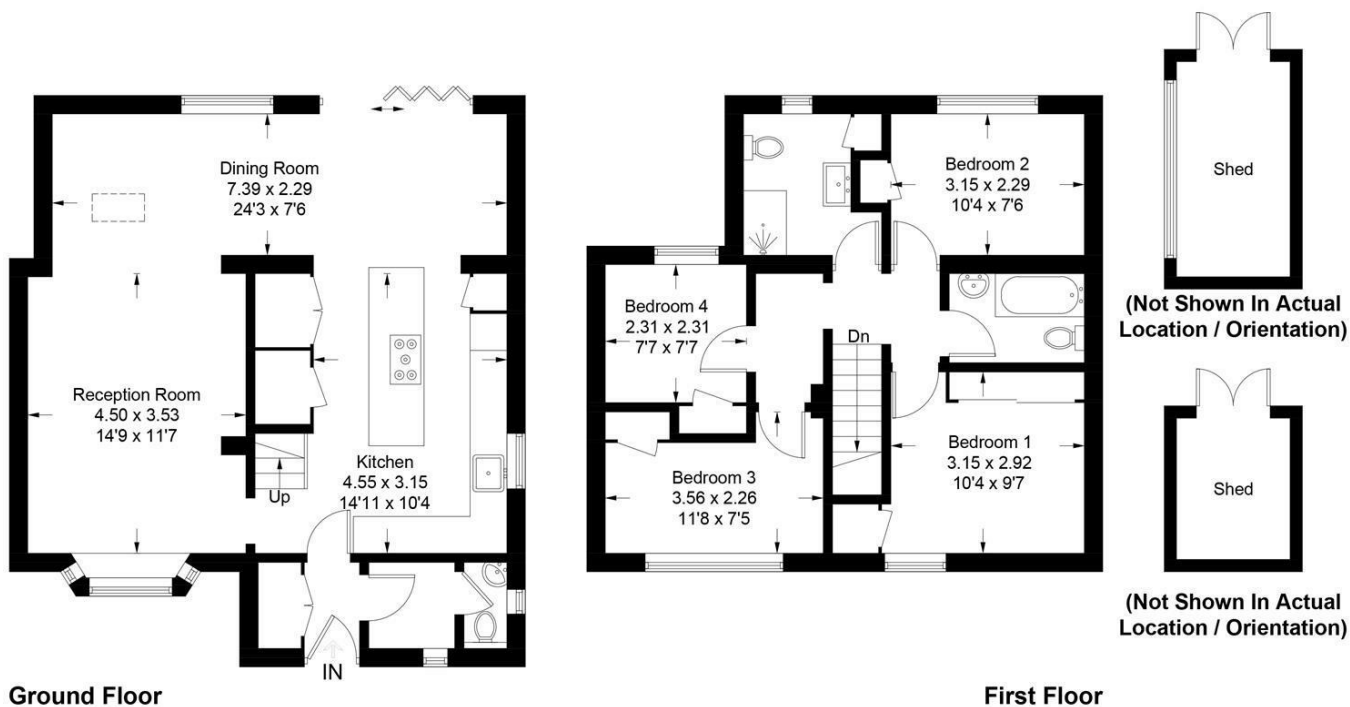
Energy Efficiency Rating		
	Current	Potential
Very energy efficient - lower running costs		
(92 plus) A		
(81-91) B		83
(69-80) C	70	
(55-68) D		
(39-54) E		
(21-38) F		
(1-20) G		
Not energy efficient - higher running costs		
EU Directive 2002/91/EC		
England & Wales		



IMPORTANT NOTICE: Williams of Petersfield and its clients give notice that: they have no authority to make or give any representations or warranties in relation to the property. These particulars do not form any part of any offer or contract and must not be relied upon as statements or representations of fact. Any areas, measurements or distances are approximate. The text, photographs and plans are for guidance only and are not necessarily comprehensive. It should not be assumed that the property has all necessary planning, Building Regulation or other consents and Williams of Petersfield have not tested any services, equipment or facilities. Purchasers must satisfy themselves by inspection or otherwise.

Glebe Road, GU31 5SB

Approximate Gross Internal Area = 111.7 sq m / 1202 sq ft
Sheds = 10.7 sq m / 115 sq ft
Total = 122.4 sq m / 1317 sq ft



These plans are for representation purposes only as defined by RICS - Code of Measuring Practice. Not to Scale.
Produced for Williams of Petersfield. (ID988917)

Williams of Petersfield

6 - 8 College Street, Petersfield, Hampshire, GU31 4AD

01730 233333 sales@williamsopetersfield.co.uk www.williamsopetersfield.co.uk

The Property Misdescriptions Act 1991: The Agent has not tested any apparatus, equipment, fixtures and fittings or services and so cannot verify that they are in working order or fit for the purpose. A buyer is advised to obtain verification from their solicitor or surveyor. References to the tenure of a property are based upon information supplied by the seller. The agent has not had sight of the title documents. A buyer is advised to obtain verification from their solicitor. Items shown in photographs are NOT included unless specifically mentioned within the sales particulars. They may however be available by separate negotiation. Buyers must check the availability of any property and make an appointment to view before embarking on any journey to see a property.