



Frenchmans Road, Petersfield

£1,550 PCM



Williams of Petersfield

INDEPENDENT ESTATE AGENTS

Frenchmans Road, Petersfield

Williams of Petersfield are delighted to offer this beautifully presented two bedroom house within few steps of the train station.

It offers spacious accommodation over three floors and boasts South facing gardens and external storage.

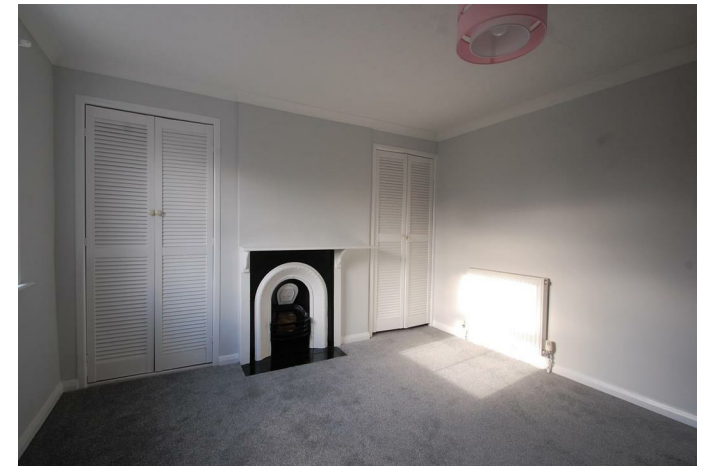
The modern kitchen is supplied with an oven and hob, with space for fridge freezer and washing machine.

The main living/dining room is light and airy and has an integral stove, skylight windows and French doors to the South facing patio area.

On the first floor there is the main bedroom which has a period feature fireplace as well as built in wardrobes. The family bathroom is also located on this floor and includes a shower cubicle, separate bathtub, W.C. and wash basin. A staircase leads to the second floor where a further double bedroom can be found.

The property is in an enviable location being just a few yards from the train station. Getting into the town centre is quick and convenient and access to the A3 is also direct and quick.

EPC - Awaited
Council Tax - B
NO PETS

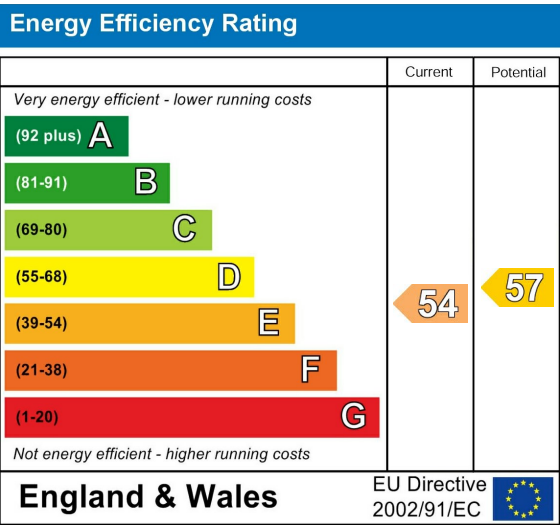


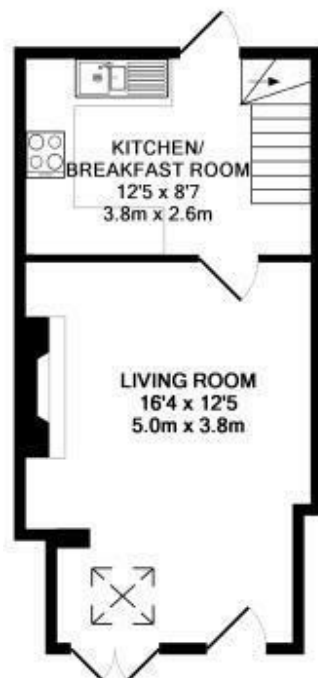
Location

Petersfield is a market town and civil parish in the East Hampshire district of Hampshire. It is 17 miles north of Portsmouth on the A3 road. The town has its own railway station on the Portsmouth direct line, the mainline rail link- connecting Portsmouth and London (Waterloo). The town is situated on the northern slopes of the South Downs. Petersfield lies wholly within an area of outstanding natural beauty and within the boundary of the South Downs National Park. The town is on the crossroads of the well-used north-south (A3) and east-west (A272) routes and it originally grew as a coach stop on the Portsmouth to London route. Petersfield is twinned with Barentin in France and Warendorf in Germany. Petersfield is a popular location for families, due to the choices of schools available, including; Churchers College, The Petersfield School (TPS) Herne Junior school and a number of infant schools and playgroups nearby. The town centre offers a good selection of shops and facilities, including Waitrose, Tescos and Lidl supermarkets and a mixture of High street brands and local independent businesses. Being within the South Downs National Park there are a plethora of country walks and cycle paths and the jewel in the Town's crown is the Heath & Lake.

Local authority

East Hampshire District Council
Penns Place, Petersfield
Hampshire, GU31 4EX
01730 266551

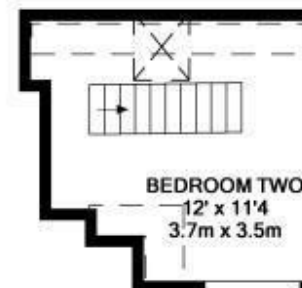




GROUND FLOOR
APPROX. FLOOR
AREA 392 SQ.FT.
(36.4 SQ.M.)



1ST FLOOR
APPROX. FLOOR
AREA 244 SQ.FT.
(22.7 SQ.M.)



2ND FLOOR
APPROX. FLOOR
AREA 120 SQ.FT.
(11.1 SQ.M.)

TOTAL APPROX. FLOOR AREA 756 SQ.FT. (70.2 SQ.M.)

Whilst every attempt has been made to ensure the accuracy of the floor plan contained here, measurements of doors, windows, rooms and any other items are approximate and no responsibility is taken for any error, omission, or mis-statement. This plan is for illustrative purposes only and should be used as such by any prospective purchaser. The services, systems and appliances shown have not been tested and no guarantee as to their operability or efficiency can be given.

Made with Metropix ©2015

Williams of Petersfield

6 - 8 College Street, Petersfield, Hampshire, GU31 4AD

01730 233333 sales@williamsopetersfield.co.uk www.williamsopetersfield.co.uk

The Property Misdescriptions Act 1991: The Agent has not tested any apparatus, equipment, fixtures and fittings or services and so cannot verify that they are in working order or fit for the purpose. A buyer is advised to obtain verification from their solicitor or surveyor. References to the tenure of a property are based upon information supplied by the seller. The agent has not had sight of the title documents. A buyer is advised to obtain verification from their solicitor. Items shown in photographs are NOT included unless specifically mentioned within the sales particulars. They may however be available by separate negotiation. Buyers must check the availability of any property and make an appointment to view before embarking on any journey to see a property.