



Nelson Drive, Petersfield

£1,550



Williams of Petersfield

INDEPENDENT ESTATE AGENTS

Nelson Drive, Petersfield

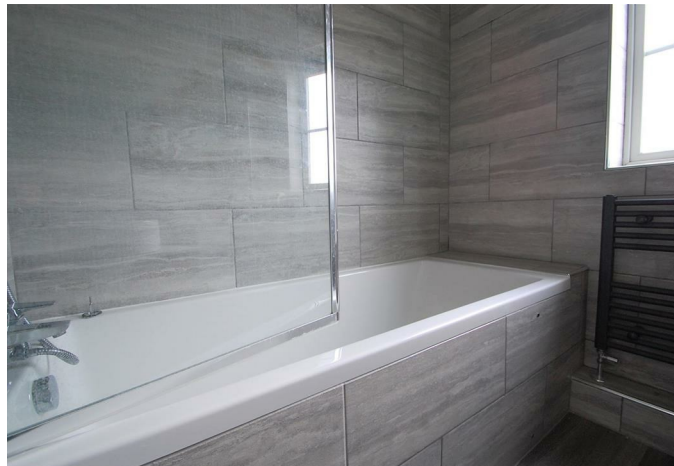
A lovely two bedroom terraced property in the desirable Ramshill Estate a moments walk from Churcher's college and local amenities.

A modern kitchen at the front of the property has a variety of units and has space for a washing machine, fridge/freezer and you could also fit a breakfast table. The living room benefits from a fitted tv unit with built in shelving, fantastic for storage. French doors take you out onto the patio and small garden where you can also access the garage via the rear door.

Upstairs, the two well proportioned double bedrooms, both of which have built in storage. The smaller of the two has been conveniently fitted with built in storage units and would make a lovely nursery. The main bedroom benefits from a modern en-suite with the family bathroom being fitted in a similar style.

Strictly no pets.

EPC - C
Council Tax Band - C



Location

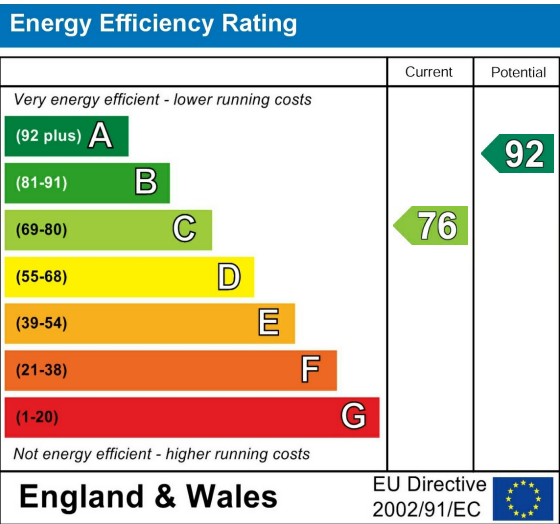
Petersfield is a market town and civil parish in the East Hampshire district of Hampshire. It is 17 miles north of Portsmouth on the A3 road. The town has its own railway station on the Portsmouth direct line, the mainline rail link- connecting Portsmouth and London (Waterloo). The town is situated on the northern slopes of the South Downs. Petersfield lies wholly within an area of outstanding natural beauty and within the boundary of the South Downs National Park. The town is on the crossroads of the well-used north-south (A3) and east-west (A272) routes and it originally grew as a coach stop on the Portsmouth to London route. Petersfield is twinned with Barentin in France and Warendorf in Germany. Petersfield is a popular location for families, due to the choices of schools available, including; Churchers College, The Petersfield School (TPS) Herne Junior school and a number of infant schools and playgroups nearby. The town centre offers a good selection of shops and facilities, including Waitrose, Tescos and Lidl supermarkets and a mixture of High street brands and local independent businesses. Being within the South Downs National Park there are a plethora of country walks and cycle paths and the jewel in the Town's crown is the Heath & Lake.

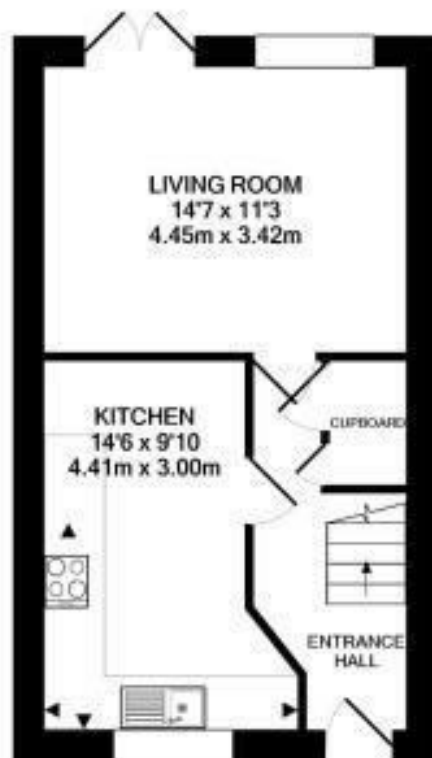
Local authority

East Hampshire District Council
Penns Place, Petersfield
Hampshire, GU31 4EX
01730 266551

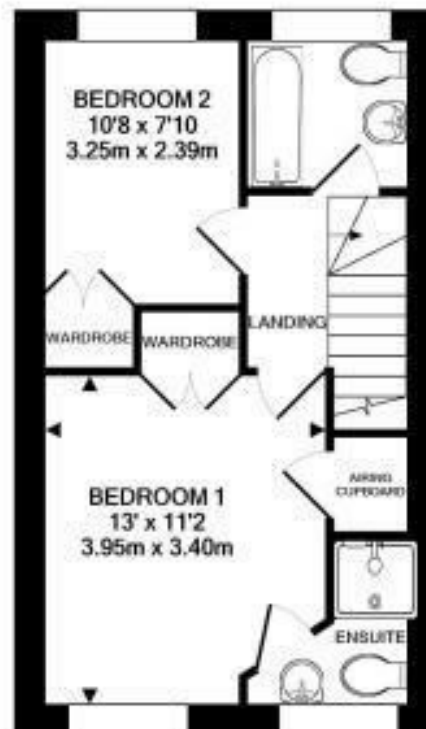
Additional Information

All main services





GROUND FLOOR
APPROX. FLOOR
AREA 377 SQ.FT.
(35.0 SQ.M.)



1ST FLOOR
APPROX. FLOOR
AREA 377 SQ.FT.
(35.0 SQ.M.)



OUTBUILDINGS
APPROX. FLOOR
AREA 147 SQ.FT.
(13.7 SQ.M.)

TOTAL APPROX. FLOOR AREA 900 SQ.FT. (83.6 SQ.M.)

Whilst every attempt has been made to ensure the accuracy of the floor plan contained here, measurements of doors, windows, rooms and any other items are approximate and no responsibility is taken for any error, omission, or mis-statement. This plan is for illustrative purposes only and should be used as such by any prospective purchaser. The services, systems and appliances shown have not been tested and no guarantee as to their operability or efficiency can be given.
Made with Metropix Q2020

Williams of Petersfield

6 - 8 College Street, Petersfield, Hampshire, GU31 4AD

01730 233333 sales@williamsopetersfield.co.uk www.williamsopetersfield.co.uk

The Property Misdescriptions Act 1991: The Agent has not tested any apparatus, equipment, fixtures and fittings or services and so cannot verify that they are in working order or fit for the purpose. A buyer is advised to obtain verification from their solicitor or surveyor. References to the tenure of a property are based upon information supplied by the seller. The agent has not had sight of the title documents. A buyer is advised to obtain verification from their solicitor. Items shown in photographs are NOT included unless specifically mentioned within the sales particulars. They may however be available by separate negotiation. Buyers must check the availability of any property and make an appointment to view before embarking on any journey to see a property.