



Drum Mead, Petersfield

Offers Over £225,000



Williams of Petersfield

INDEPENDENT ESTATE AGENTS

Drum Mead, Petersfield

Introducing the perfect home for commuters! A delightful one-bedroom house located in the heart of Petersfield, Drum Mead, just a stone's throw away from Petersfield train station. This property is an absolute gem for those seeking a convenient and comfortable lifestyle.

Step inside to be greeted by a refreshing, crisp, and clean interior. The new carpets and large window flooding the downstairs with natural light make for an inviting atmosphere. The recently renovated kitchen boasts a fantastic finish and comes fully equipped with modern appliances. Storage space is abundant, ensuring your belongings are neatly organized.

Upstairs, you'll find a thoughtfully designed layout with built-in wardrobe space, ensuring your belongings are effortlessly organized. The bathroom upstairs is well-appointed, while the double bedroom provides ample room and additional storage options.

Tucked away in the left hand corner of Drum Mead, via a little path through No. 13. This beautiful south facing garden wraps around the property, creating the ideal spot to relax and unwind. To top it off, your very own allocated parking spot ensures convenience for your daily commute.

EPC - D
Council Tax - B



Location

Petersfield is a market town and civil parish in the East Hampshire district of Hampshire. It is 17 miles north of Portsmouth on the A3 road. The town has its own railway station on the Portsmouth direct line, the mainline rail link- connecting Portsmouth and London (Waterloo). The town is situated on the northern slopes of the South Downs. Petersfield lies wholly within an area of outstanding natural beauty and within the boundary of the South Downs National Park. The town is on the crossroads of the well-used north-south (A3) and east-west (A272) routes and it originally grew as a coach stop on the Portsmouth to London route. Petersfield is twinned with Barentin in France and Warendorf in Germany. Petersfield is a popular location for families, due to the choices of schools available, including; Churchers College, The Petersfield School (TPS) Herne Junior school and a number of infant schools and playgroups nearby. The town centre offers a good selection of shops and facilities, including Waitrose, Tescos and Lidl supermarkets and a mixture of High street brands and local independent businesses. Being within the South Downs National Park there are a plethora of country walks and cycle paths and the jewel in the Town's crown is the Heath & Lake.

Local authority


East Hampshire District Council
Penns Place, Petersfield
Hampshire, GU31 4EX
01730 266551

Additional Information

All main services

Tenure

Freehold

Energy Efficiency Rating		Current	Potential
<i>Very energy efficient - lower running costs</i>			
(92 plus) A			90
(81-91) B			
(69-80) C			
(55-68) D		66	
(39-54) E			
(21-38) F			
(1-20) G			
<i>Not energy efficient - higher running costs</i>			
England & Wales		EU Directive 2002/91/EC	

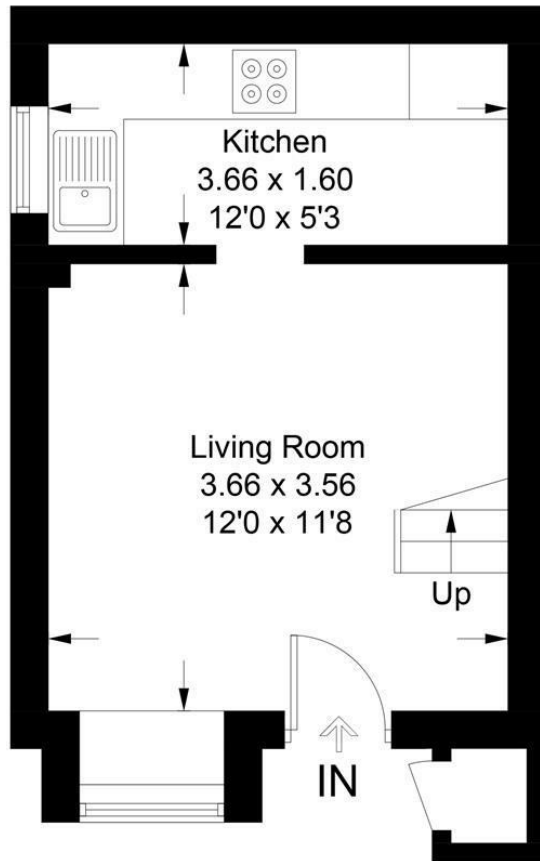


Drum Mead, GU32 3AQ

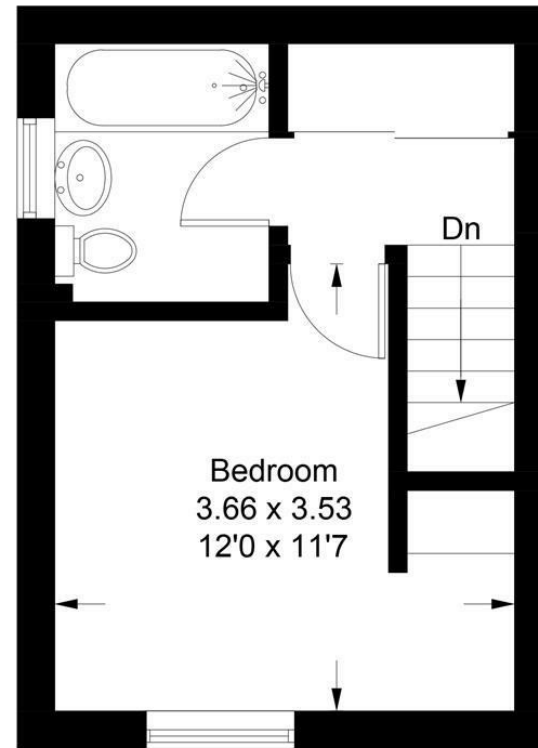
Approximate Gross Internal Area = 38.8 sq m / 418 sq ft

External Cupboard = 0.4 sq m / 4 sq ft

Total = 39.2 sq m / 422 sq ft



Ground Floor



First Floor

These plans are for representation purposes only as defined by RICS - Code of Measuring Practice. Not to Scale.
Produced for Williams of Petersfield. (ID994348)

Williams of Petersfield

6 - 8 College Street, Petersfield, Hampshire, GU31 4AD

01730 233333 sales@williamsopetersfield.co.uk www.williamsopetersfield.co.uk

The Property Misdescriptions Act 1991: The Agent has not tested any apparatus, equipment, fixtures and fittings or services and so cannot verify that they are in working order or fit for the purpose. A buyer is advised to obtain verification from their solicitor or surveyor. References to the tenure of a property are based upon information supplied by the seller. The agent has not had site of the title documents. A buyer is advised to obtain verification from their solicitor. Items shown in photographs are NOT included unless specifically mentioned within the sales particulars. They may however be available by separate negotiation. Buyers must check the availability of any property and make an appointment to view before embarking on any journey to see a property.