



Swan Street, Petersfield

**£625 Per Month**



**Williams of Petersfield**  
INDEPENDENT ESTATE AGENTS



## Swan Street, Petersfield

Available immediately, we are delighted to offer to let this ground floor, studio flat in the well regarded Swan Court development in the centre of Petersfield.

This fantastic space is bright and airy, well presented and benefits from built in storage and a great shower room. This apartment has gated, allocated parking located to the rear of the block which is accessed by electric gates.

Swan Court is a development of 20 exclusive apartments in central Petersfield, it comprises of a number of different sized apartments, sympathetically converted to reflect the original character of the building. The building is maintained to a high standard and has lift access to all floors.

The apartment is located a moments walk from Petersfield's mainline train station and a stones throw from The Square.

Council Tax Band - A

EPC - D

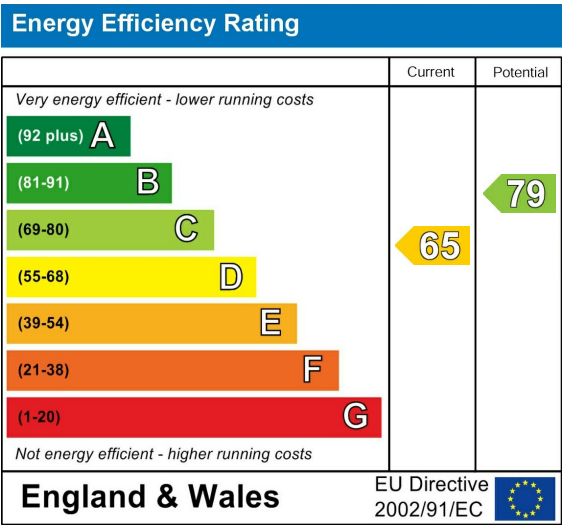


Location

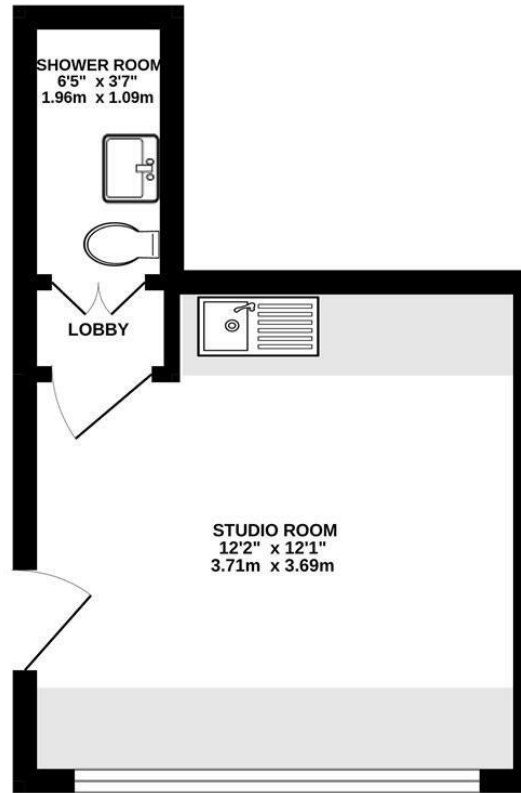
Petersfield is a market town and civil parish in the East Hampshire district of Hampshire. It is 17 miles north of Portsmouth on the A3 road. The town has its own railway station on the Portsmouth direct line, the mainline rail link- connecting Portsmouth and London (Waterloo). The town is situated on the northern slopes of the South Downs. Petersfield lies wholly within an area of outstanding natural beauty and within the boundary of the South Downs National Park. The town is on the crossroads of the well-used north-south (A3) and east-west (A272) routes and it originally grew as a coach stop on the Portsmouth to London route. Petersfield is twinned with Barentin in France and Warendorf in Germany. Petersfield is a popular location for families, due to the choices of schools available, including; Churchers College, The Petersfield School (TPS) Herne Junior school and a number of infant schools and playgroups nearby. The town centre offers a good selection of shops and facilities, including Waitrose, Tescos and Lidl supermarkets and a mixture of High street brands and local independent businesses. Being within the South Downs National Park there are a plethora of country walks and cycle paths and the jewel in the Town's crown is the Heath & Lake.

Local authority

East Hampshire District Council  
Penns Place, Petersfield  
Hampshire, GU31 4EX  
01730 266551



GROUND FLOOR  
170 sq.ft. (15.8 sq.m.) approx.



TOTAL FLOOR AREA : 170 sq.ft. (15.8 sq.m.) approx.

Whilst every attempt has been made to ensure the accuracy of the floorplan contained here, measurements of doors, windows, rooms and any other items are approximate and no responsibility is taken for any error, omission or mis-statement. This plan is for illustrative purposes only and should be used as such by any prospective purchaser. The services, systems and appliances shown have not been tested and no guarantee as to their operability or efficiency can be given.  
Made with Metropix ©2022

## Williams of Petersfield

6 - 8 College Street, Petersfield, Hampshire, GU31 4AD

01730 233333 [sales@williamsopfetersfield.co.uk](mailto:sales@williamsopfetersfield.co.uk) [www.williamsopfetersfield.co.uk](http://www.williamsopfetersfield.co.uk)

The Property Misdescriptions Act 1991: The Agent has not tested any apparatus, equipment, fixtures and fittings or services and so cannot verify that they are in working order or fit for the purpose. A buyer is advised to obtain verification from their solicitor or surveyor. References to the tenure of a property are based upon information supplied by the seller. The agent has not had site of the title documents. A buyer is advised to obtain verification from their solicitor. Items shown in photographs are NOT included unless specifically mentioned within the sales particulars. They may however be available by separate negotiation. Buyers must check the availability of any property and make an appointment to view before embarking on any journey to see a property.