



Linden Drive, Hampshire

£610 PCM



Williams of Petersfield

INDEPENDENT ESTATE AGENTS

Linden Drive, Hampshire

A spacious and well presented one bedroom flat conveniently located in the centre of Liss village and within a short walk of the mainline railway station (London Waterloo to Portsmouth line).


The accommodation comprises Living room, kitchen with a range of base and eye level units and plumbing for washing machine, double bedroom with built in wardrobe, bathroom with shower over bath and the added benefit of allocated parking.

The village of Liss is situated in the South Downs National Park and has a good range of shops for everyday needs. Great transport links are available in the form of a mainline train station on the Portsmouth to London Waterloo line.

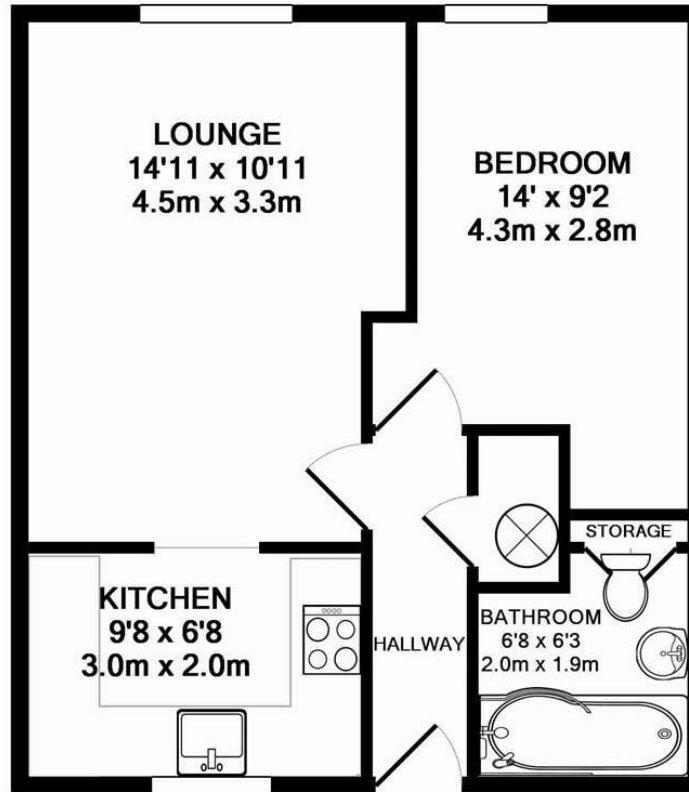
EPC - D

Available end of May 2020



Energy Efficiency Rating		
	Current	Potential
<i>Very energy efficient - lower running costs</i>		
(92 plus) A		
(81-91) B		
(69-80) C	64	69
(55-68) D		
(39-54) E		
(21-38) F		
(1-20) G		
<i>Not energy efficient - higher running costs</i>		
England & Wales	EU Directive 2002/91/EC	





TOTAL APPROX. FLOOR AREA 406 SQ.FT. (37.7 SQ.M.)

Whilst every attempt has been made to ensure the accuracy of the floor plan contained here, measurements of doors, windows, rooms and any other items are approximate and no responsibility is taken for any error, omission, or mis-statement. This plan is for illustrative purposes only and should be used as such by any prospective purchaser. The services, systems and appliances shown have not been tested and no guarantee as to their operability or efficiency can be given

Made with Metropix ©2014

Williams of Petersfield

6 - 8 College Street, Petersfield, Hampshire, GU31 4AD

01730 233333 sales@williamsopetersfield.co.uk www.williamsopetersfield.co.uk

The Property Misdescriptions Act 1991: The Agent has not tested any apparatus, equipment, fixtures and fittings or services and so cannot verify that they are in working order or fit for the purpose. A buyer is advised to obtain verification from their solicitor or surveyor. References to the tenure of a property are based upon information supplied by the seller. The agent has not had site of the title documents. A buyer is advised to obtain verification from their solicitor. Items shown in photographs are NOT included unless specifically mentioned within the sales particulars. They may however be available by separate negotiation. Buyers must check the availability of any property and make an appointment to view before embarking on any journey to see a property.